

Franklin Wireless
3940 Ruffin Rd.
San Diego, CA 92123

(858) 623-0000
www.franklinwireless.com
www.JEXtream.net

JEXtream
MDM



JEXtream Mobile Device Management

User Manual Version 1.0

2/7/2024

Contents

Overview	3
Login	4-6
Device List Navigation.....	7
Device Details.....	8
Device Configuration.....	9
Main Wi-Fi/Guest Wi-Fi.....	10
Connections.....	11
Display.....	12
Control.....	12
Data Usage.....	13
Lan Settings.....	14
Security.....	15
Submitting Changes & Updating.....	16
Contact, Privacy Policy & Terms of Service.....	17

Overview

Thank you for purchasing the Franklin Jextream 5G Hotspot. Please open the box and review the contents carefully.

This document will guide you step by step to manage from set up to configuration of your device remotely.

JEXtream Mobile Device Management (MDM) from Franklin Wireless is designed for businesses, education institutions and enterprises to remotely manage a high volume of devices simply and securely.

This web-based application ensures reliable connectivity between offices, kiosks, remote workers, students and more.

Login & Set Up

Signing Up

1. Go To <https://mdm.jextream.net>

2. SIGUP:

From the Login Screen click " Sign Up"

JEXtream

LOGIN

I've read and will comply with the terms of Jextream MDM agreement
To review the contract [Click Here](#)

LOGIN

[Forgot Password?](#) [Sign Up](#)

3. DEVICE INFORMATION:

Look for IMEI on the label of the box. If the box is not available, Open the back cover of the Jextream device, Remove the battery and you will see IMEI information.

INDIVIDUAL SIGN UP


Select Model
RG2100

Model
RG2100

TAC
35856379

Last 7 Digits of IMEI

VERIFY



MODEL and TAC CODE will automatically populate.

4. PROFILE SETUP:

Enter First and Last Name, Email and Password.

Please enter the email which you have access to.

Password must contain at least 8 characters, one capital, one number, one special character

INDIVIDUAL SIGN UP

First Name*

Last Name*

Email*

Country Code*
USA

Enter New Password

Confirm Password

At least 8 characters(Special Characters,Numbers and Capital letters)

BACK

NEXT

5. Click Next to proceed.

6. VERIFICATION:

Check your email that you entered in the previous step for an email containing the ACTIVATION CODE. It may take 3 to 5 minutes to get the activation code. Please check your spam folder if you don't see it in your Inbox.

7. AUTHENTICATION:

Enter the Activation code and Verify.

INDIVIDUAL SIGN UP

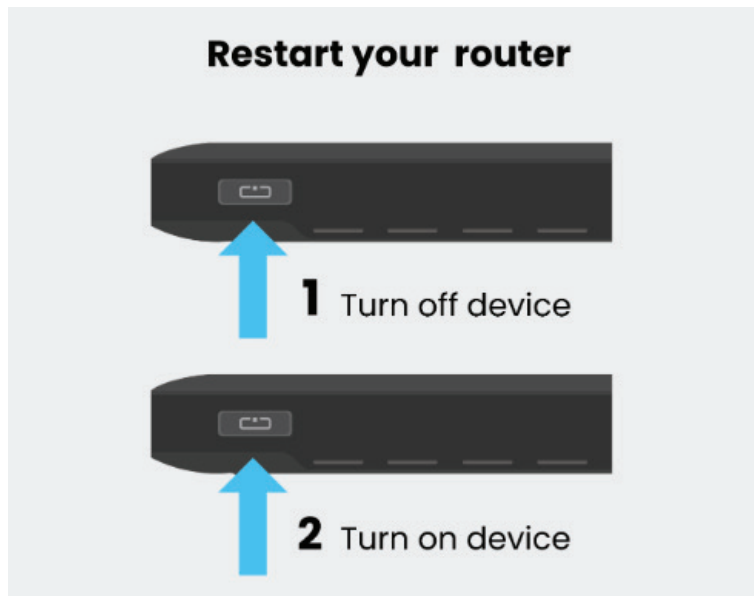
Enter the Activation Code

*Enter the Activation Code sent to your registered Email.

BACK VERIFY

8. POWER ON THE DEVICE:

Once you click VERIFY, Power on the device. If it is already ON, POWER CYCLE the device for it to register.



Device List Navigation

1. Model - Unique number given to each product
2. Status - Shows if the device is online or offline
3. Device SN - Same as the IMEI
4. IMEI - The hardware ID of your device
5. Carrier - Your service provider
6. Config Updated - the Date/Time on the latest update configuration
7. Device Name - The name you have given to the device
8. Partner - Vendor that the device was purchased from
9. Usage - Current data usage
10. Signal - Signal strength of the device
11. Search - Let's you search for a device based on the IMEI, Device Name, and Description
12. Add Devices - An Individual can add up to 5 devices
13. Tutorial - Job Aid Videos

The screenshot shows the JEXtream Business interface. At the top left is the logo and 'Version(0.4)'. On the right, there are tabs for 'Devices', 'Tutorial', and 'INDIVIDUAL'. Below the header, there is a search bar with a magnifying glass icon and an 'ADD DEVICES' button. The main content is a table titled 'Routers' with the following columns: Model, Status, Device SN, IMEI, Carrier, Config Updated, Device Name, Description, Partner, Usage(GB), and Signal. The table contains two rows of data. The first row shows a device with Model 'RG2100', Status '●', Device SN 'XXXXXXXXXXXXXXXXXX', IMEI 'XXXXXXXXXXXXXXXXXX', Carrier 'XXXXX', Config Updated '10/24/2022 : 17:23', Device Name 'RG2100', Description 'RG2100 Demo', Partner 'XXXXX', Usage(GB) '1.9750', and Signal strength represented by a green bar chart. The second row shows a device with Model 'RG2100', Status '●', Device SN 'XXXXXXXXXXXXXXXXXX', IMEI 'XXXXXXXXXXXXXXXXXX', Carrier 'XXXXX', Config Updated '10/14/2022 : 10:23', Device Name 'RG2100 #2', Description 'RG2100 Dummy', Partner 'XXXXX', Usage(GB) '0', and Signal strength represented by a green bar chart. At the bottom right of the table, there is a 'Rows per page' dropdown set to '10' and a pagination indicator '1-2 of 2'.

1 Model	2 Status	3 Device SN	4 IMEI	5 Carrier	6 Config Updated	7 Device Name	8 Description	9 Partner	10 Usage(GB)	10 Signal
RG2100	●	XXXXXXXXXXXXXXXXXX	XXXXXXXXXXXXXXXXXX	XXXXX	10/24/2022 : 17:23	RG2100	RG2100 Demo	XXXXX	1.9750	Signal strength bar
RG2100	●	XXXXXXXXXXXXXXXXXX	XXXXXXXXXXXXXXXXXX	XXXXX	10/14/2022 : 10:23	RG2100 #2	RG2100 Dummy	XXXXX	0	Signal strength bar

To view and configure a specific device simply click on that device from the list.

Device Detail

Device Detail - XXXXXXXXXXXXXXXX

Device Name: RG2100 | Description: RG2100 Demo | [SAVE](#)

Status: **ONLINE** | Signal: 5G | Battery: 100% | Usage: 2.953 GB

Serial Number: XXXXXXXXXXXXXXXX | Partner Name: TMOBILE | [CONFIGURATION](#)

IMEI Number: XXXXXXXXXXXXXXXX | Group: |

Last Reported: 11/16/2022 10:01 | Organization: |

Wi-Fi Details

Main Wi-Fi - Enabled

SSID	RG2100 XXXX
Password	XXXXXXXXXX
Wi-Fi Band	2.4GHz

Guest Wi-Fi - Enabled

SSID	RG2100 Guest XXXX
Password	XXXXXXXXXX
Wi-Fi Band	5GHz

WAN Details

IPv4

IP Address	192.0.0.2
Primary DNS	192.0.0.1
Secondary DNS	0.0.0.0

IPv6

IP Address	2607:fb91:4284
Primary DNS	fd00:976a::9
Secondary DNS	fd00:976a::9

LAN Details

Default Gateway	192.168.0.1
-----------------	-------------

Connected Devices

Hostname	Last Connected On	IP	MAC	Interface
No data available				

Rows per page: 10

The Device Detail Screen gives a high-level view of each specific device including signal strength, battery level, data usage, Wi-Fi details with the SSID and password for both the main and guest Wi-Fi, WAN details of IPV4 and IPV6, LAN details, and information of the last connected devices.

Guest WiFi is Automatically disabled but can be enabled in the configuration settings.

Main Wi-Fi - Enabled

SSID	RG2100 XXXX
Password	XXXXXXXXXX
Wi-Fi Band	2.4GHz

Guest Wi-Fi - Disabled

SSID	RG2100 Guest XXXX
Password	XXXXXXXXXX
Wi-Fi Band	5GHz

Main Wi-Fi - Enabled

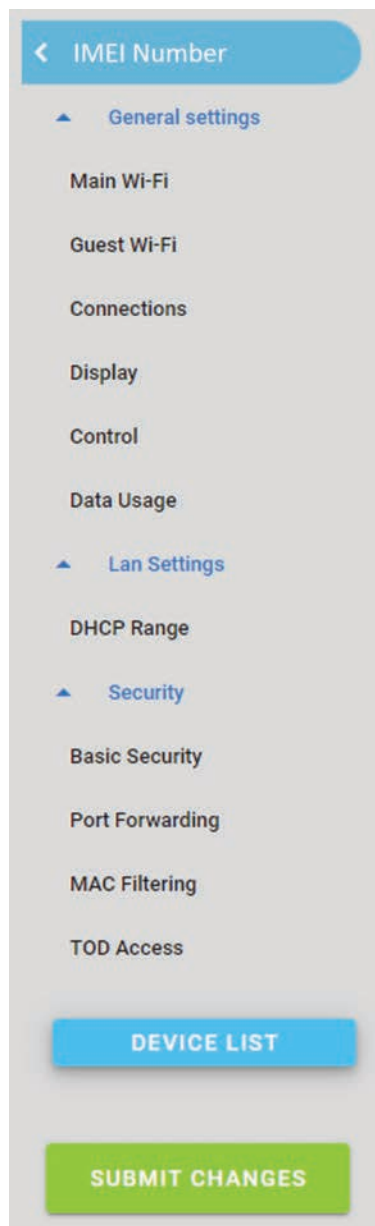
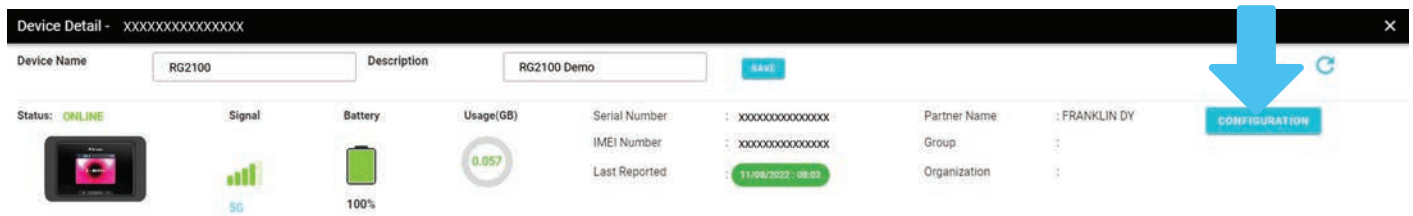
SSID	RG2100 XXXX
Password	XXXXXXXXXX
Wi-Fi Band	2.4GHz

Guest Wi-Fi - Enabled

SSID	RG2100 Guest XXXX
Password	XXXXXXXXXX
Wi-Fi Band	5GHz

Device Configuration

With JEXtream you have the ability to make changes to individual devices by choosing the **CONFIGURATION** button



Each type of setting has its own category tab listed on the left hand side of the Configuration screen.

To make setting changes simply click on the category you wish to access and it will open in the main screen.

IMPORTANT:

After you make any changes to a category you must hit the **APPLY** button before moving to another category or submitting the change

Main Wi-Fi/Guest Wi-Fi

This where you can change and set the Wifi SSID name and password, the WiFi band, total number of connections allowed, the allowed number of connection split between main and guest, and the inactive time where the device goes to sleep when not connected.

Main Wi-Fi
This page allows you to configure basic feature of Main Wi-Fi interface. You can also change Wi-Fi bands, set the Wi-Fi network Name(SSID) / Password, and set the Wi-Fi maximum connection of Main/Guest interfaces.

Wi-Fi Band*
Wi-Fi 2.4GHz

Wi-Fi SSID Name*
RG2100 0181

Password

Authentication*
WPA2/WPA3 Mixed

Total Connections*
10

Main Wifi: 5 Guest Wifi: 5

Inactive Timer*
20 minutes

Privacy Separator

SSID Stealth

APPLY

Make sure to choose the number of connection allowed for both the Main and Guest Wifi when you enable Guest or device will constantly reboot.

- **Privacy Separator** prevents wireless devices from communicating with each other via a mobile router to further enhance security.
- **SSID Stealth** stops the router from sending out the wireless network's name, making it invisible to users, hiding the name from showing up the list of nearby networks.

Guest Network
Enable Guest Wi-Fi and clicking Actions menu allows you to configure basic feature of Guest Wi-Fi interface. You can also change Wi-Fi bands and set the Wi-Fi network name(SSID) / password.

Enable	SSID	Password	Wi-Fi Band	Actions
<input checked="" type="checkbox"/> Enabled	XXXXXXXXXX Guest	XXXXXXXXXX	Wi-Fi 5GHz	⋮

APPLY

Edit > Guest Network

Wi-Fi Band*
Wi-Fi 5GHz

Wi-Fi SSID Name*
XXXXXXXXXX Guest

Password

Authentication*
WPA2/WPA3 Mixed

Privacy Separator

SSID Stealth

SAVE

- Toggle the button to Enable to turn on the Guest Network.
- Select the 3 dots on the right to edit.

Connections

This where you can change and set the connection mode, allow or block data roaming, set the allowed connection type(s) and add your DNS settings.

GENERAL

Modem Connection Mode

Select the Connection Mode that you need for this Modem as WAN

Connection Mode
Automatic

- Automatic
- 5G Only
- 5G/LTE
- LTE/3G
- LTE Only
- 3G

Data Roaming

Interface Connection Type

Select the connection type that your router will provide the interface method between WiFi and USB.

Interface
WiFi + USB

- WiFi + USB
- WiFi only
- USB only

DNS Settings

Allows to get the DNS IP Address from your ISP automatically.

Automatic DNS Primary DNS Address Secondary DNS Add...

Automatic DNS is set as default

APPLY

Display

This where you can set the display and make battery saving changes.

You can choose to show or not show data usage, set the screen timeout, turn on and off the power indicator light, allow the wifi names and passwords to be displayed or hidden from the screen, and to show or nor show the web admin page address.

Display

The device display goes off if there's no more button press during this timeout period to save battery power. When the display is off, the white light on the top of the device blinks indicating the device is on.

Show Usage: Device Display Timeout:

This setting controls if the white light (LED) illuminates below the device display, indicating the device is powered on.

Power LED Indicator:

Enable Wi-Fi SSID & Password on your device

Enable WiFi SSID & Password on your de...:

Enable displaying the Web Admin page information on your device display.

APPLY

Control

This where you can enable and disable the factory reset button, enable or disable the power bank feature, set the battery level to stop charging, and enable or disable if a user can access the web interface. (Note: Accessing the device's web UI is disabled by default, and once it is enabled, your device's Web login password would be generated to "Admin123")

Control

Manage the reset button underneath the back cover of your device

Factory Reset Button:

Your device can charge your cellphone or similar device. Connect your device to charge and select Connected device when prompted on the device display.

Power Bank:

Select the battery level of your device when to stop charging connected device.

Battery Level:

Allow accessing the device web UI and change the Admin password on your device.

Access Web Interface:

APPLY

Data Usage

This is where you can change and set the data usage settings with monthly or yearly limits, data allowed, and turn on the email alert when a limit has been reached.

Data Usage

Data Usage Meter will reset on the date selected here and collect an amount of data on this schedule.

Monthly Yearly

Day of Month

Limit* Usage Unit

Limit Alert

APPLY

Note: data limit settings are informational only will not disable or slow down the device.

Lan Settings

DHCP Range is a list of IP addresses to include or exclude for assignment to DHCP clients.

DHCP Range
DHCP (Dynamic Host Configuration Protocol) manages to automatically assign IP addresses and other network configuration parameters to network devices.

192.168.0.1	IP Pool Starting Address* 100
192.168.0.1	IP Pool Ending Address* 254
Lease Time (Sec)* 7200	
Default Gateway* 192.168.0.1	

APPLY

Port forwarding directs any incoming from the internet to a specified service on your local network.

Port Forwarding
Port Forwarding enables computers to access WWW, FTP or other services provided by the LAN.

Enable

Rule Name	WAN Port Range	Enable	Actions

Add > Port Forwarding Rule

Rule Name

WAN Port

Local IP Address

LAN Port

Protocol

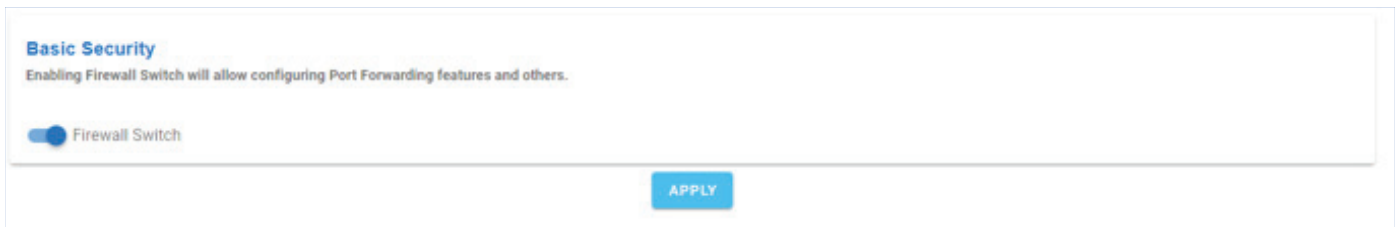
Enable

SAVE

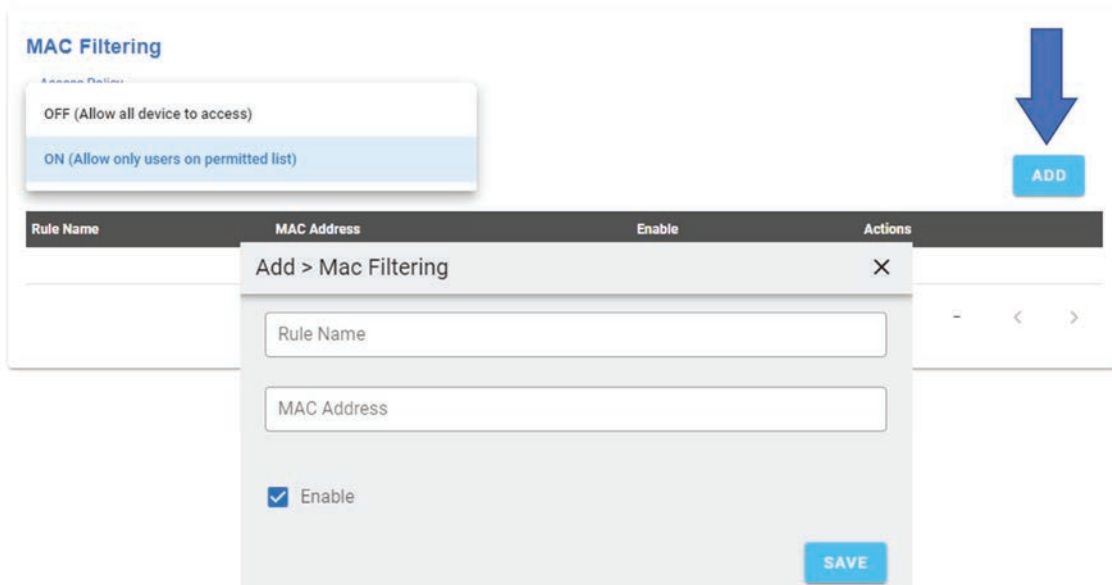
ADD

Security

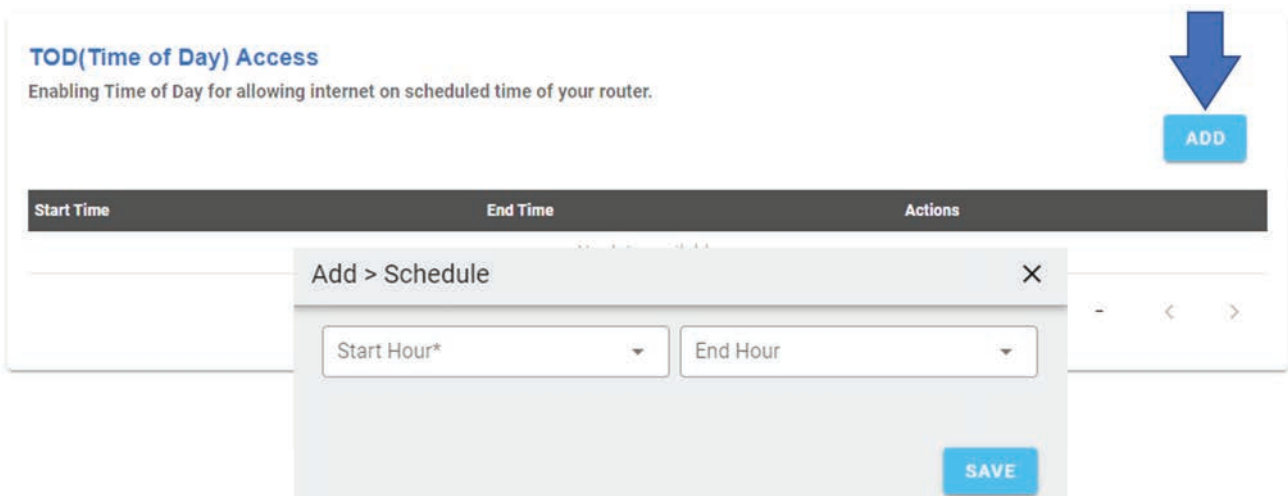
Having the firewall on will protect the hotspot.



MAC Filtering allows you to set specific MAC IDs you wish to allow to connect to your device.



TOD allows you to set specific times of day allowed for the user to access the internet.



Submitting Changes & Updating

Once you have made and hit **APPLY** for all of your changes you will click on the **SUBMIT CHANGES** button to send it to the device.

You will see your applied configuration changes listed. If all are correct hit the **UPDATE PARAMETER TO DEVICE** button to send the changes to the device.

Configuration confirmation & Update

Please review all parameters to set in this Group configuration panel. You review and click APPLY to update all parameters to the device in Group. Or you can adjust parameters at Configuration if necessary.

General Settings

WebAdminPageInfoDisplay -1
AccessWebInterface -1
DisplayWiFiNamePassword -1
LEDIndicatorEnable -0
StopChargingBatteryLevel -2

Security

IPv6Firewall -1
AntiForwardDNSPort -undefined

DISCARD PARAMETER **UPDATE PARAMETER TO DEVICE**

The device will power cycle and come back on with the changes made. Lastly you will see the device Config Updated with the date and time in the green bubble.

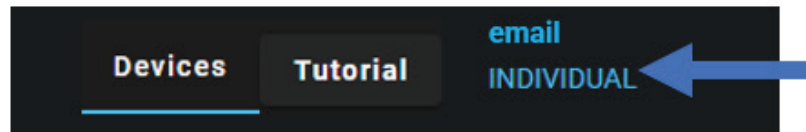


Model	Status	Device ID	SN	Carrier	Config Updated	Device Name	Description	Partner	Usage(MB)	Signal
RG2100	⊕	XXXXXXXXXXXXXXXXXX	XXXXXXXXXXXXXXXXXX	XXXXXX	16/04/2020 - 17:25	RG2100	RG2100 Demo	XXXXXX	1 8750	📶
RG2100	⊕	XXXXXXXXXXXXXXXXXX	XXXXXXXXXXXXXXXXXX	XXXXXX	16/14/2020 - 18:30	RG2100 #2	RG2100 Dummy	XXXXXX	0	📶


Rows per page: 10 + 1 of 2

Contact, Privacy Policy & Terms of Service

To log a ticket or report an issue simply click on your email and a side menu will open.



User Information

 Full Name

 Email

 Role

LOGOUT

[Contact JEXtream](#)

[Privacy Policy](#)

[Terms Of Service](#)

UNSUBSCRIBE